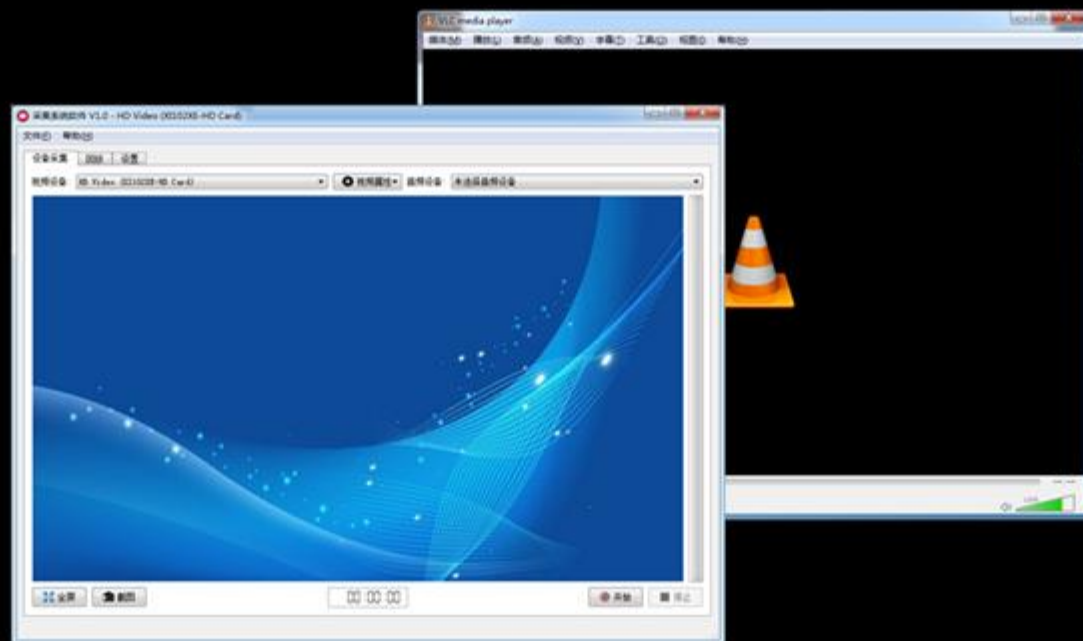


视频采集系统软件

快速使用指南



Capture Express
Quick Start Manual

01 简介 (Overview)

| | |
|------------------------|---|
| 特性列表 Feature List | 1 |
| 安装设备 Install Device | 2 |

02 视频采集软件 (Capture Express)

| | |
|---------------------------------|---|
| 视频预览 Video Preview | 4 |
| 编码录制 Encoding and Recording | 6 |
| 视频直播 Live Video Broadcasting | 8 |

03 支持与帮助 (Support and Help)

| | |
|---------------------------|---|
| 支持与帮助 Support and Help | 9 |
|---------------------------|---|



超高清 4K 视频采集和录制 Ultra 4K video capture and Record

支持从标清到超高清画面的采集、预览和录制。
Support from SD to Ultra HD video capture, preview and record.

能够提供近千万像素的画面品质，成像细腻程度为 HD 1080p 画面的 4 倍。
It can provide ten millions pixels at least. The dedicate degree is 4 times than HD.

RTMP 直播 RTMP Live Streaming

使用标准 RTMP 协议进行视频直播，兼容多种 RTMP 服务器。
Using RTMP protocol for live streaming, it is compatible with a variety of RTMP server.



使用硬件加速编码 Using Hardware Accelerated Encoder

基于英特尔视频快速同步技术实现对视频的硬件加速编码，大大降低对系统资源的使用。
Based on Intel Quick Sync technology, the video encoding greatly reduce CPU usage.



安装 USB 3.0 设备 Install USB 3.0 Device

连接采集棒到计算机的 USB 3.0 接口上，系统会自动安装驱动程序，安装成功后，绿色指示灯亮起。
Connect Dongle to USB 3.0 port and the system will automatically install the driver. When the driver has been installed successfully, the green indicator light will be on.

连接采集盒到计算机的 USB 3.0 接口上，手动安装驱动程序，安装成功后，绿色指示灯亮起。
Connect Box to USB 3.0 port and install the driver manually. When the driver has been installed successfully, the green indicator light will be on.

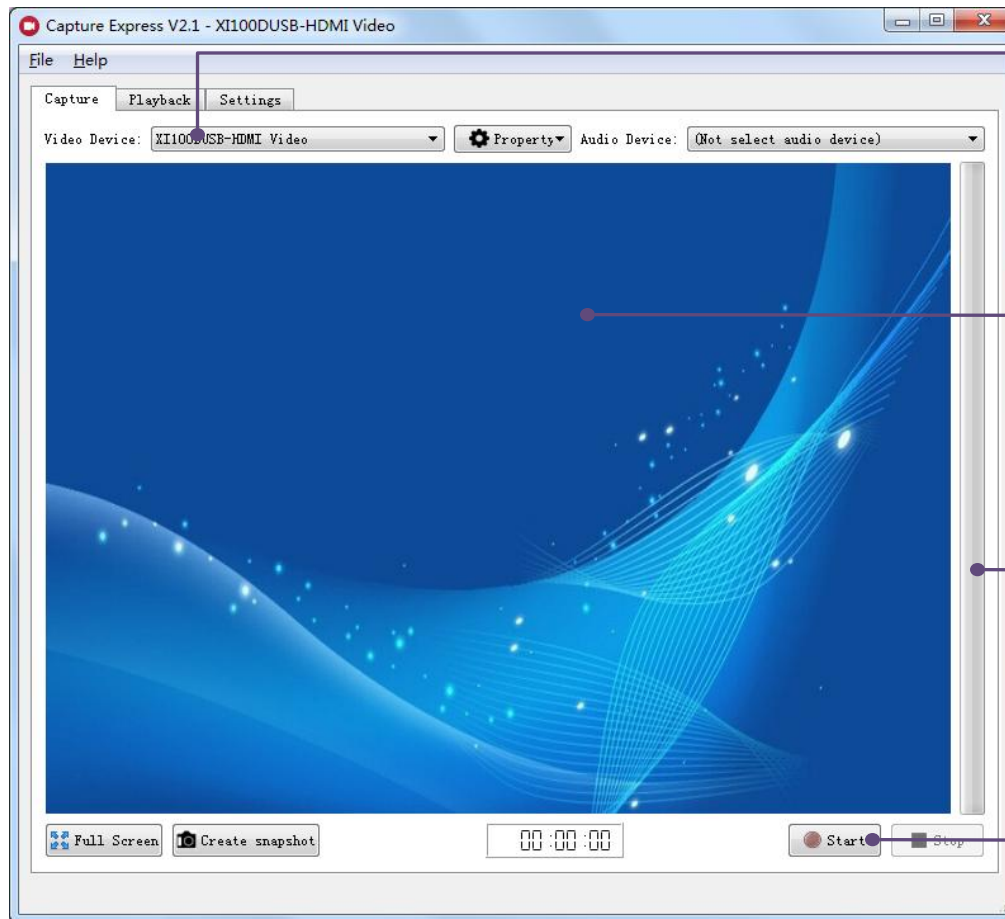


安装 PCI Express 采集设备 Install PCI Express Device

将采集卡插入计算机主板的 PCI-E 插槽内，启动计算机，并手动安装驱动程序。
Insert card into a PCI-E slot in computer motherboard and install the driver manually.

视频采集软件 Capture Express

3



从设备列表中选择设备
Choose the device in the list

视频预览窗口显示视频画面
Preview window will display the video

音量预览进度控件显示音量大小
Audio Process Control displays the volume

点击“开始”按钮进行录制 / 直播
Click the “Start” to record or broadcast.

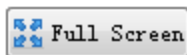
视频预览 Video Preview

从“设置 \ 视频设备”中打开“视频预览”。
Choose “Video Preview” in “Settings \ Video Device” .

视频预览窗口显示视频画面
Display the video in preview window.

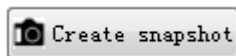
切换选择视频设备可以预览不同的视频设备
Change video device to preview it.

全屏幕预览 Full Screen Preview



点击“全屏”按钮进行全屏预览
Click the “Full Screen” button to preview in full screen mode.

截图 Snapshot



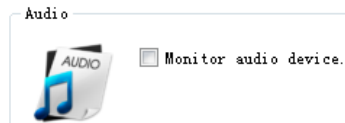
点击“截图”按钮进行截取当前视频画面
Click the “Create snapshot” button to make a snapshot of the current video.

音量预览 Volume Preview

从音频设备列表中选择预览设备
Choose the device from the audio device list for preview.

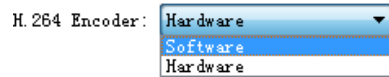
音频预览进度条显示音量大小
Audio Process Control displays the volume.

音频监听 Audio Monitor



选择“设置 \ 音频设备 \ 音频监听” 监听当前音频设备
Choose the “Settings \ Audio Device \ Monitor audio device” to monitor audio device.

H.264 编码器 H.264 Encoder

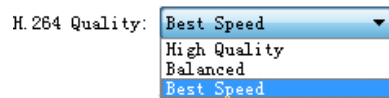


软件编码兼容各种运行环境，但会增大 CPU 占用
Software encoder is compatible with the various environments, but it increases CPU usage.

硬件编码会降低 CPU 占用，但对运行环境有一定的要求
Hardware encoder will reduce CPU usage, but it only runs in a limited number of environment.

编码参数 Encoding Parameter

色彩空间推荐使用 YUYV，当无法显示预览画面时，可以修改为其他色彩空间
The recommended color space to be used is YUYV. When it is not possible to display the preview video, it can be changed to other color spaces.



编码质量分 3 种：最佳、平衡和最快，质量越高，画面效果越好，但 CPU 占用也会增大
There are 3 kinds of coding quality : High Quality, Balanced and Best Speed. The higher the coding quality is , the better the video quality is. However, CPU usage will also increase.

硬件编码的优势 Advantage of Hardware Encoding

大大降低 CPU 的占用
Greatly reduce CPU usage.

在编码低位率视频时能够取得更好的效果
It can achieve better effect when encoding low bit rate video.



硬件编码环境 Hardware Encoding Environment

使用 Windows 7 / Windows 8 操作系统
OS is Windows 7 or Windows 8.



使用 Intel 酷睿 3 或者酷睿 4 代 CPU
Use Intel Ivy CPU or Haswell CPU

使用 Intel HD Graphics 系列显卡
Use Intel HD Graphics 3000 / 4000 / 4200 / 4400 / 4600 / 5000 / 5100 / 5200

RTMP 直播 RTMP Live Streaming



在设置界面选中“RTMP”复选框并填好地址，点击“开始”按钮后就可以服务器推送直播流
Check “RTMP” checkbox in Settings and fill in the RTMP server address. After click “Start” button, it will push RTMP stream to server.

RTMP 直播兼容 Flash Media Server、Red 5、Wowza、Nginx 等 RTMP 服务器
RTMP live streaming is compatible with Flash Media Server, Red 5, Wowza, Nginx, etc.





技术支持 Support

如遇到问题请联系我们 support@magewell.net
If you have any questions, please send email to support@magewell.net .

帮助 Help

访问 <http://www.magewell.com/software> 获取最新的软件信息
Visit <http://www.magewell.com/software> to get the latest upgrade.